

Series UXC-800

800 W resistor



A Miba Group Company

1/2

For variable speed drives, power supplies, control devices, robotics, motor control and other power designs, the easy mounting fixture assures an auto-calibrated pressure to the cooling plate of about 300 N.

Features

- 800 W operating power
- Non-Inductive design
- ROHS compliant
- High insulation & partial discharge performance
- Materials in accordance with UL 94 V-0
- Resistor is also available with preapplied PCM (Phase Change Material) (ask for details)



Technical Specifications

Resistance value	$\geq 0.03 \Omega \leq 1 \text{ M}\Omega$ (higher values on request)
Resistance tolerance	$\pm 5 \%$ to $\pm 10 \%$ $\pm 1 \%$ to $\pm 2 \%$ on special request for limited ohmic values with the reduction of the max. power / pulse rating (ask for details)
Temperature coefficient	$\pm 500 \text{ ppm}/^\circ\text{C}$ ($0.1 \Omega \leq 0.2 \Omega$) standard $\pm 150 \text{ ppm}/^\circ\text{C}$ ($> 0.2 \Omega \leq 1.5 \text{ M}\Omega$) standard lower TCR on special request for limited ohmic values
Power rating	800 W at 85°C bottom case temperature
Short time overload	1,000 W at 70°C for 10sec., $\Delta R = 0.4\%$ max.
Maximum working voltage	5,000 V DC = 3,500 V AC RMS (50 Hz) higher voltage on request, not exceeding max. power
Electric strength voltage	7 kVrms / 50 Hz / 500 VA, test time 1 min. between terminal und case (up to 12 kVrms on request) voltages above 10 kVrms are tested at DC equivalent to avoid pre damage of component
Partial discharge	4 kVrms < 10 pC
Peak current	up to 1,500 A depending on pulse length and frequency (ask for details)
Insulation resistance	> 10 G Ω at 1,000 V
Single shot voltage	up to 12 kV norm wave (1.5/50 μsec)
Creeping distance	> 42mm (standard, higher on request)
Air distance	> 14mm (standard, higher on request)
Inductance	$\geq 80 \text{ nH}$ (typical), measuring frequency 10 kHz
Capacity/mass	$\geq 110 \text{ pF}$ (typical), measuring frequency 10 kHz
Capacity/parallel	$\geq 40 \text{ pF}$ (typical), measuring frequency 10 kHz
Operating temperature	-55°C to $+155^\circ\text{C}$
Mounting - torque for contacts	1.8 Nm to 2 Nm
Mounting - torque	1.6 Nm to 1.8 Nm M4 screws
Internal temperature sensor available on request	PT-1000 / PT-100 / Type K / Type J (ask for details)
Cable variation available on request	HV-cable / Flying leads (ask for details)
Standard cable Type	H&S Radox 9 GKW AX 1,5mm ² (other cable types on special request)
Weight	~120 g

General Specifications

Electric support

Alumina ceramic metalized with EBG ALTOX film on the bottom for improved heat transfer and optimum discharge

Encapsulation

Resin-filled epoxy casing with large creeping distance to mass, large air distance between the terminals and high insulation resistance (CTI 600)

Resistance Element

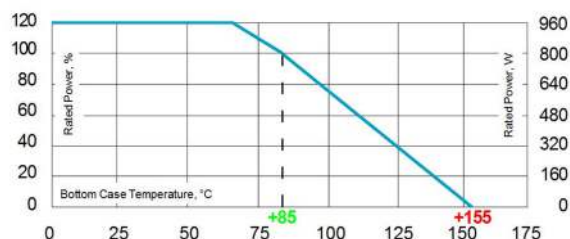
Special design for low inductance and capacitance values. The element employs our special METOXFILM, which demonstrates stability while covering high wattage and pulse loading

Housing

Housings are made without color additives. The color definition is natural and can vary in different pigmentation

Contacts

- Easy load connection with M4 and M5 screws
(Inch thread terminals on request)
- Connector height available from 25 to 42 mm
- Various sleeves for increasing creeping distance up to 85 mm or potted cable connections are available on request
- Contacts standard M5 (M4 on special request - connection screw thread max. 7 mm)



Derating (thermal res.) UXC-800: 11.43 W/K (0.09K/W)

Power rating: 800 W at 85°C bottom case temperature*

Please ask for detailed mounting procedure!

* This value is only applicable when using a thermal conduction to the heat sink $R_{th-cs} < 0.025 \text{ K/W}$. This value can be obtained by using a thermal transfer compound with a heat conductivity of at least 1 W/mK. The flatness of the cooling plate must be better than 0.05 mm overall. Surface roughness should not exceed 6.4 μm .

Series UXC-800

EBG

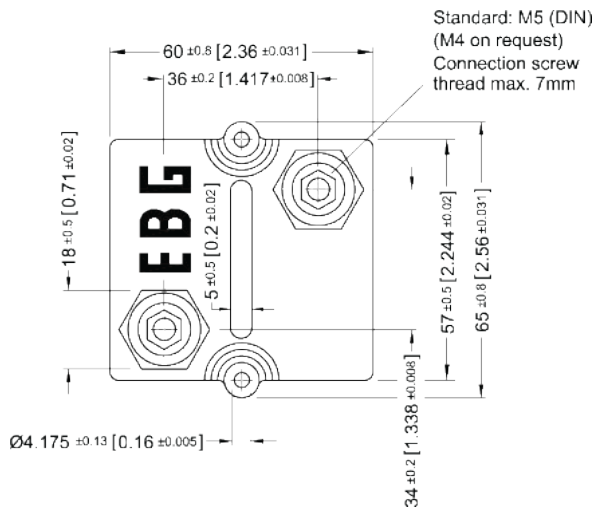
RESISTORS

A Miba Group Company



2/2

Dimensions in mm [inches]



How to make an order

■ Standard terminal

UXC-800_Ohmic Value_Tolerance_Terminal Height_Contact

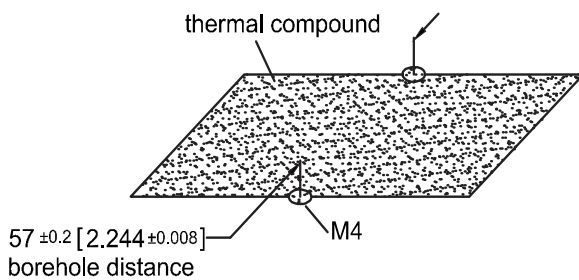
For example

UXC-800 5R 10% 30/32 M5

■ Examples for optional terminals

UXC-800 5R 10% 25/25 M5 or UXC-350-7 5R 10%

Borehole Distance



Test Specifications*

Test	Method	Tolerance Drift**
Short time overload	1,000 W/10sec.	0.40%
Humidity steady state	56 days/40°C/95%	0.25%
Temp. Cycling	-55/+125/5cycles	0.20%
Shock	40g/4,000 times	0.25%
Vibrations	2-500Hz/10g	0.25%
Load life 3,000cyl	PN 30 min. on / 30 min off	0.40%
Terminal strengths	200 N for hexa. thread contacts	0.05%

Please note most all of our UXC customers have their own custom designed drawing. Therefore please do not hesitate to discuss your special needs with the local representative or contact us directly.

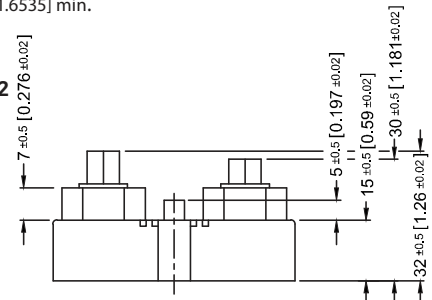
Standard Terminals

Air distance: 14mm [0.5512] min.

Creeping distance: 42mm [1.6535] min.

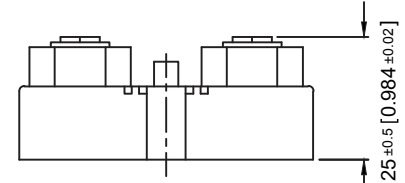
Terminal height 30/32

Standard



Terminal height 25/25

Optional



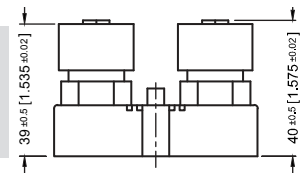
Terminal Options (for increased air & creeping distances)

Other terminal dimensions available, contact for more information

UXC-800-9

Air distance: 25mm [0.984] min.

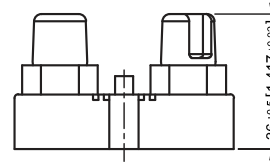
Creeping distance: 83mm [3.267] min.



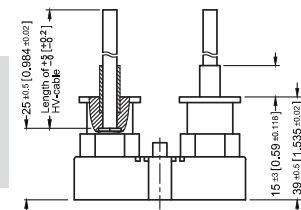
UXC-800-7

Air distance: 26.7mm [1.0512] min.

Creeping distance: 50mm [1.968] min.



UXC-800-8

Air and creeping distance
depends on length of HV-cable

* The test methods are according to IEC 60068-2

** The tolerance drift is the possible change of the resistance value because of the certain test

Disclaimer



A Miba Group Company

The given statements and information herein are recommendations for the use of our products and are based on our experience in combination with applicable technical standards.

They are for guidance only and do not represent any assurance of characteristics or warranty commitments for the products or their suitability for specific applications.

The suitability of the products for the intended use by the user depends on different boundary conditions and influencing factors and is to be assessed exclusively by the user.

DISCLAIMER:

NO WARRANTY OR GUARANTEE, EXPRESS OR IMPLIED, IS MADE WITH RESPECT TO THE PRODUCTS, DESIGNS, DATA, INFORMATION DESCRIBED OR ANY INTELLECTUAL PROPERTY CONTAINED THEREIN. ANY WARRANTY OR GUARANTEE OF MERCHANTABILITY OR FITNESS FOR A PARTICULAR PURPOSE IS ALSO EXCLUDED.

The given statements and information herein reflect the current status at the time of publication.

Typing or printing errors cannot be excluded.

This publication shall not be reprinted or reproduced in whole or in part in any form or by any means without the express written permission of EBG.