

Series ESP



The ESP resistor series is the ideal solution for high pulse load / low frequency applications. High thermal capacity, suitable for applications without air cooling (better performance with cooling). The resistors are used in dumping or braking circuit.

Features

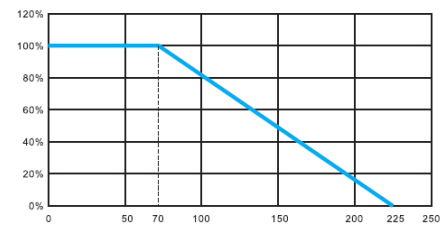
- High pulse rating (ask for details)
- Absorb high pulse energy within short period
- High quality ceramic cylinder body with brass terminals
- Good pulse load capability
- Non-Inductive design
- ROHS compliant
- Housing materials in accordance with UL 94 V-0



Technical Specifications

ESP-62/14

Resistance value	1 Ω ≤ 1 KΩ (other values on special request)
Resistance tolerance	±5 % to ±10 %
Temperature coefficient	±250 ppm/°C (at +85°C ref. to +25°C)
Power rating	high pulse rating (ask for details)
Maximum operating voltage	1.000 V (higher on request)
Pulse Energy Rating	2.800 J at 1 sec.
Mounting	M4 screws, max. torque 3 Nm (static)



ESP-62/20

Resistance value	1 Ω ≤ 1 KΩ (other values on special request)
Resistance tolerance	±5 % to ±10 %
Temperature coefficient	±250 ppm/°C (at +85°C ref. to +25°C)
Power rating	high pulse rating (ask for details)
Maximum operating voltage	1.000 V (higher on request)
Pulse Energy Rating	3.300 J at 1 sec.
Mounting	M4 screws, max. torque 3 Nm (static)

How to make a request

ESP-model no. _Ohmic Value_ Tolerance

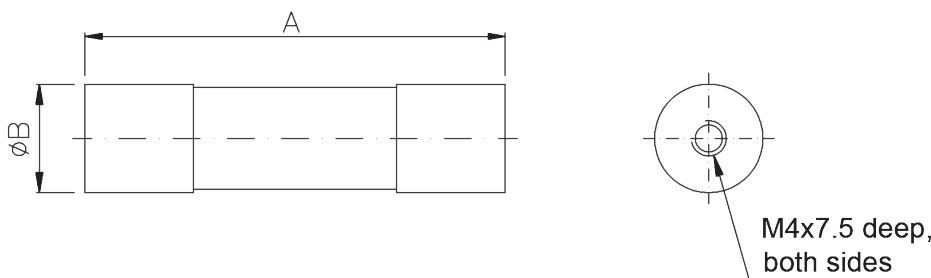
For example:
ESP-62/14 20R 10%

Model Specifications

Model no.	Time constant = 0.5 s	Dimensions in mm	
		A ±0.50	Ø B ±0.50
ESP-62/14	E = 2.000 J	62.00	15.00
ESP-62/20	E = 2.800 J	62.00	21.00

Possible Pulse Load ESP-62/20

2300 J for τ = 0.7s, time between pulses 60s
3300 J for τ = 1s, time between pulses 120s
4500 J for τ = 1.4s, time between pulses 180s



The above spec. sheet features our standard products. For further options please contact your local Miba Resistors representative.

Disclaimer



The given statements and information herein are recommendations for the use of our products and are based on our experience in combination with applicable technical standards.

They are for guidance only and do not represent any assurance of characteristics or warranty commitments for the products or their suitability for specific applications.

The suitability of the products for the intended use by the user depends on different boundary conditions and influencing factors and is to be assessed exclusively by the user.

DISCLAIMER:

NO WARRANTY OR GUARANTEE, EXPRESS OR IMPLIED, IS MADE WITH RESPECT TO THE PRODUCTS, DESIGNS, DATA, INFORMATION DESCRIBED OR ANY INTELLECTUAL PROPERTY CONTAINED THEREIN. ANY WARRANTY OR GUARANTEE OF MERCHANTABILITY OR FITNESS FOR A PARTICULAR PURPOSE IS ALSO EXCLUDED.

The given statements and information herein reflect the current status at the time of publication.

Typing or printing errors cannot be excluded.

This publication shall not be reprinted or reproduced in whole or in part in any form or by any means without the express written permission of Miba Resistors.